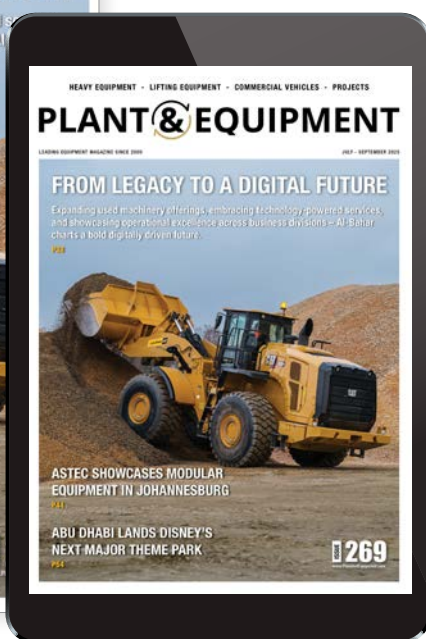
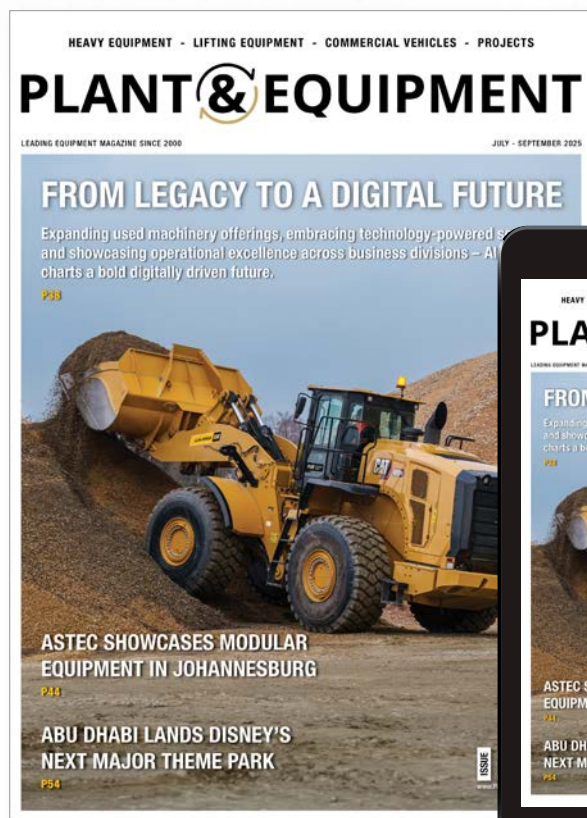


MAGAZINE CIRCULATION



29,500

Average circulation

5

Issues per year

17,500



Print Circulation 60%

Circulated Regions

- 50% Middle East Region
- 30% Africa Region
- 20% International / Exhibition

12,000



Digital Circulation 40%

Circulated Online Magazine Platforms

www.plantandequipment.com
www.issuu.com
www.yumpu.com
www.readwhere.com

www.fliphtml5.com
www.anyflip.com
www.pubhtml5.com
www.magzter.com